

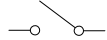
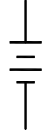



## DRAWING GUIDE - Smart - UPS

Sheet No.	Component /Detail	Description
1	Drawing Guide	APC Smart-UPS 3000VA RM 4U 120V ShipboardDrawing Guide
2	UPS Isometric View	APC Smart-UPS 3000VA RM 4U 120V Shipboard Isometric View
3	UPS General Arrangement	APC Smart-UPS 3000VA RM 4U 120V ShipboardGeneral Arrangement
4	System One Line Diagram	APC Smart-UPS 3000VA RM 4U 120V Shipboard One Line Diagram

LEGEND			
SYMBOL	DESCRIPTION	SYMBOL	DESCRIPTION
	CIRCUIT BREAKER		DC-AC CONVERTER (INVERTER)
	RELAY		BATTERY
	AC-DC CONVERTER		

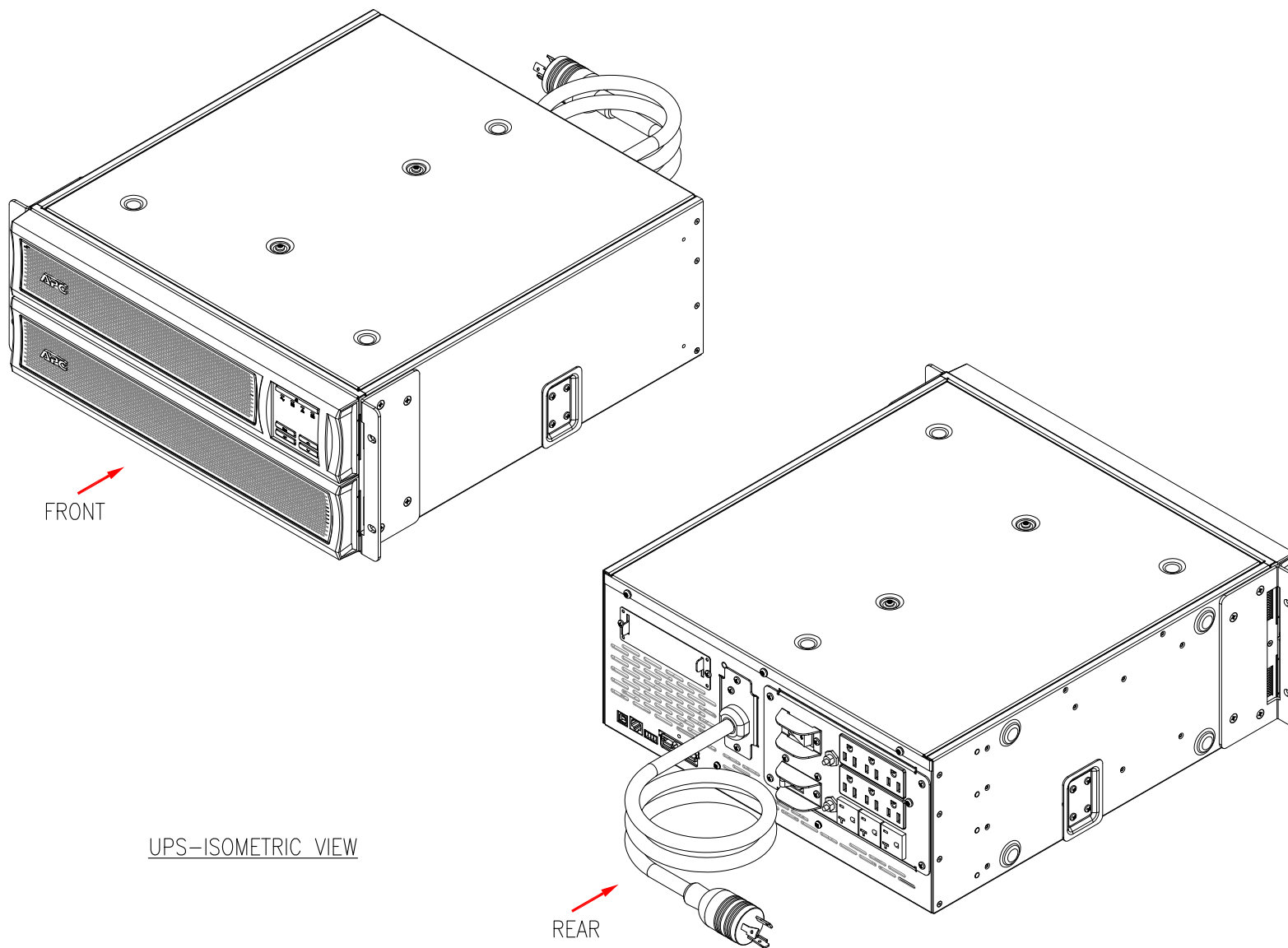
THIS DRAWING AND SPECIFICATIONS HEREIN ARE THE PROPERTY OF SCHNEIDER ELECTRIC AND SHALL NOT BE COPIED, REPRODUCED OR USED IN WHOLE OR IN PART, AS THE BASIS FOR THE MANUFACTURE OR SALE OF ITEMS WITHOUT WRITTEN PERMISSION FROM SCHNEIDER ELECTRIC. THIS DRAWING IS BASED UPON LATEST AVAILABLE INFORMATION AND IS SUBJECT TO CHANGE WITHOUT NOTICE.

**Schneider**  
Electric

**TITLE:** APC Smart-UPS  
Input: 120VAC, (L+N+G), 50/60Hz, 1PH, NEMA L5-30P  
Output: 120VAC, (L+N+G), 1PH, (6)NEMA 5-15R, (3)NEMA 5-20R  
RACK MOUNT 3000VA UPS  
DRAWING GUIDE

**PROJECT:** DRAWINGS **SHEET** 1 OF 4

<b>DWG NO:</b> SMX3000RMX93	<b>REV.</b> 0
<b>DRAWN BY:</b> JAYAPRAKASH	22-JUN-22
<b>ENGINEER:</b> Frank Chang/Charles HU	05-JUL-22
<b>APPROVED BY:</b> Harry Chen	05-JUL-22
	ANGLE PROJECTION N.A



#### NOTES:

1. INSTALLATION SHALL COMPLY WITH ALL APPLICABLE NATIONAL, STATE AND LOCAL CODES.
2. REFER TO PRODUCT DOCUMENTATION FOR ADDITIONAL DETAILS PRIOR TO INSTALLATION AND SITE PREPARATION WORK.

THIS DRAWING AND SPECIFICATIONS HEREIN ARE THE PROPERTY OF SCHNEIDER ELECTRIC AND SHALL NOT BE COPIED, REPRODUCED OR USED IN WHOLE OR IN PART, AS THE BASIS FOR THE MANUFACTURE OR SALE OF ITEMS WITHOUT WRITTEN PERMISSION FROM SCHNEIDER ELECTRIC. THIS DRAWING IS BASED UPON LATEST AVAILABLE INFORMATION AND IS SUBJECT TO CHANGE WITHOUT NOTICE.

**Schneider**  
Electric

**TITLE:** APC Smart-UPS  
Input: 120VAC, (L+N+G), 50/60Hz, 1PH, NEMA L5-30P  
Output: 120VAC, (L+N+G), 1PH, (6)NEMA 5-15R, (3)NEMA 5-20R  
RACK MOUNT 3000VA UPS  
UPS-ISOMETRIC VIEW

**PROJECT:** DRAWINGS **SHEET** 2 OF 4

**DWG NO:** SMX3000RMX93

**DRAWN BY:** JAYAPRAKASH 22-JUN-22

**ENGINEER:** Frank Chang/Charles HU 05-JUL-22

**APPROVED BY:** Harry Chen 05-JUL-22

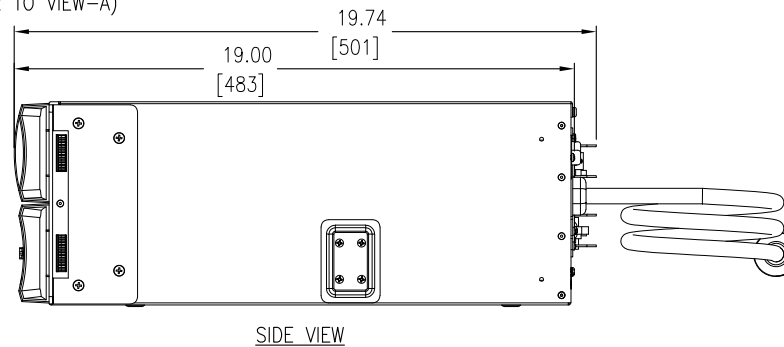
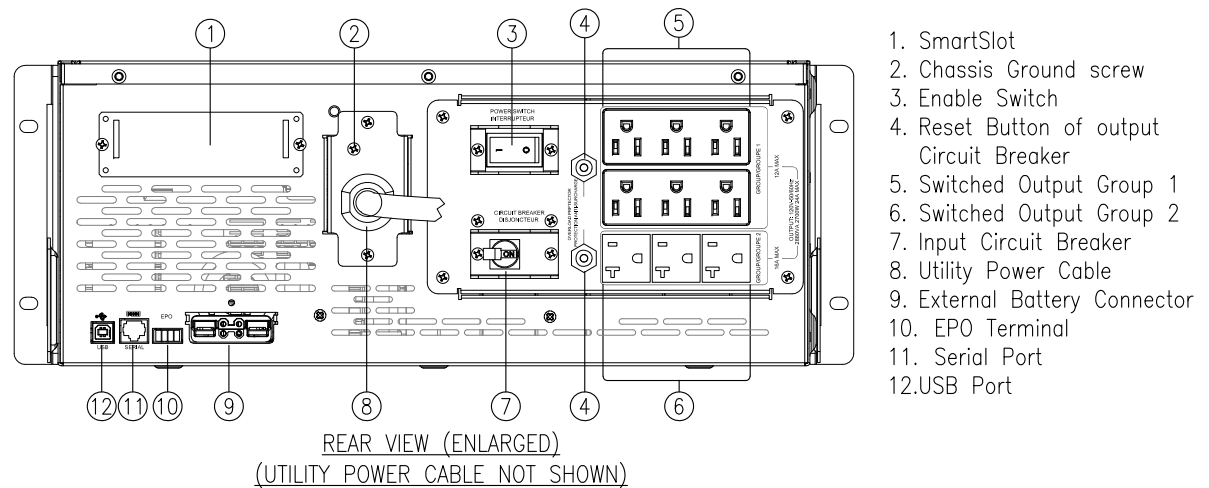
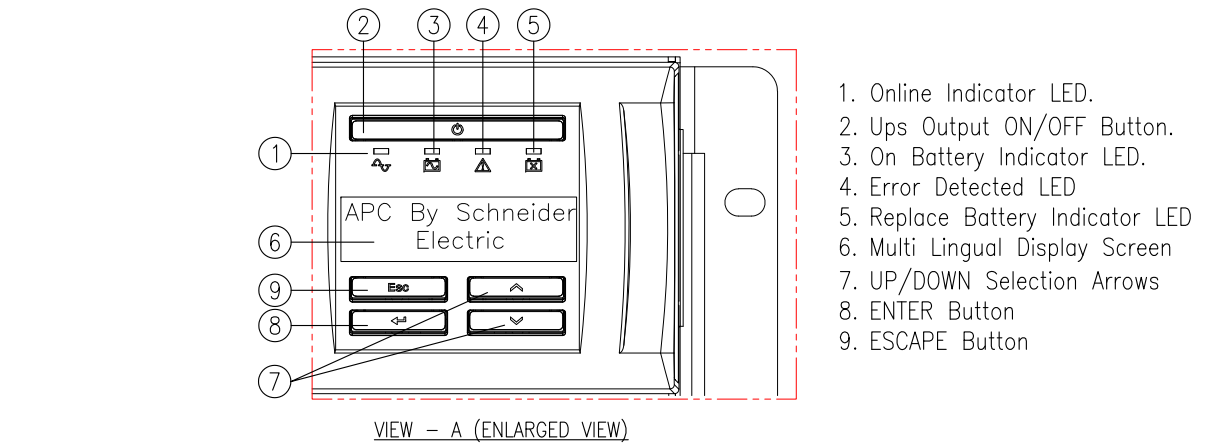
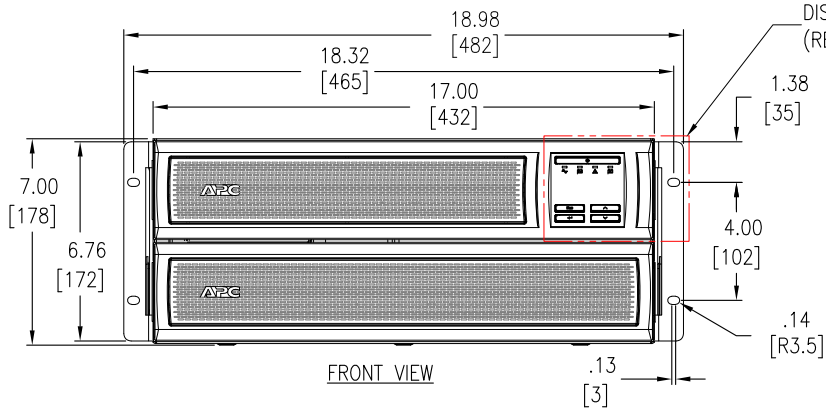
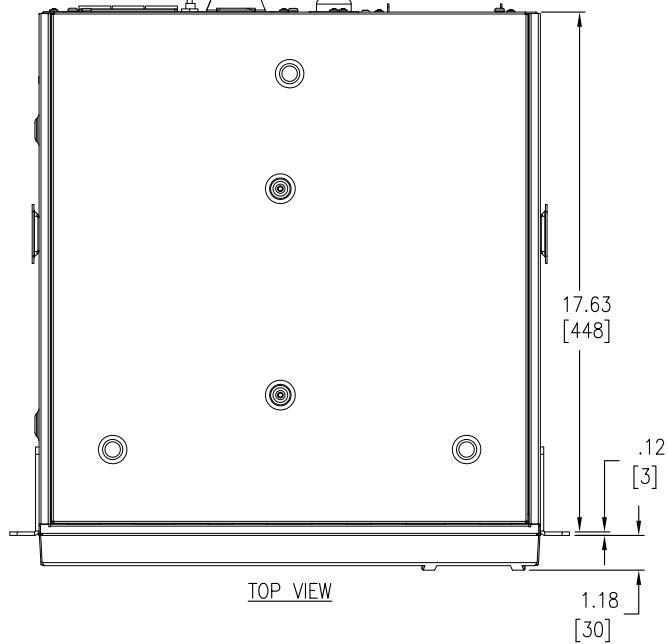
**REV.** 0

**THIRD**

**ANGLE**

**PROJECTION**

NEMA L5-30P CORDSET



#### NOTES:

1. INSTALLATION SHALL COMPLY WITH ALL APPLICABLE NATIONAL, STATE AND LOCAL CODES.
2. REFER TO PRODUCT DOCUMENTATION FOR ADDITIONAL DETAILS PRIOR TO INSTALLATION AND SITE PREPARATION WORK.
3. ALL DIMENSIONS ARE IN INCHES [MILLIMETERS].
4. CABLE ENTRY IS FROM REAR OF UNIT.
5. WEIGHT OF UNIT IS 85.19 lb [38.64 kg].

THIS DRAWING AND SPECIFICATIONS HEREIN ARE THE PROPERTY OF SCHNEIDER ELECTRIC AND SHALL NOT BE COPIED, REPRODUCED OR USED IN WHOLE OR IN PART, AS THE BASIS FOR THE MANUFACTURE OR SALE OF ITEMS WITHOUT WRITTEN PERMISSION FROM SCHNEIDER ELECTRIC. THIS DRAWING IS BASED UPON LATEST AVAILABLE INFORMATION AND IS SUBJECT TO CHANGE WITHOUT NOTICE.

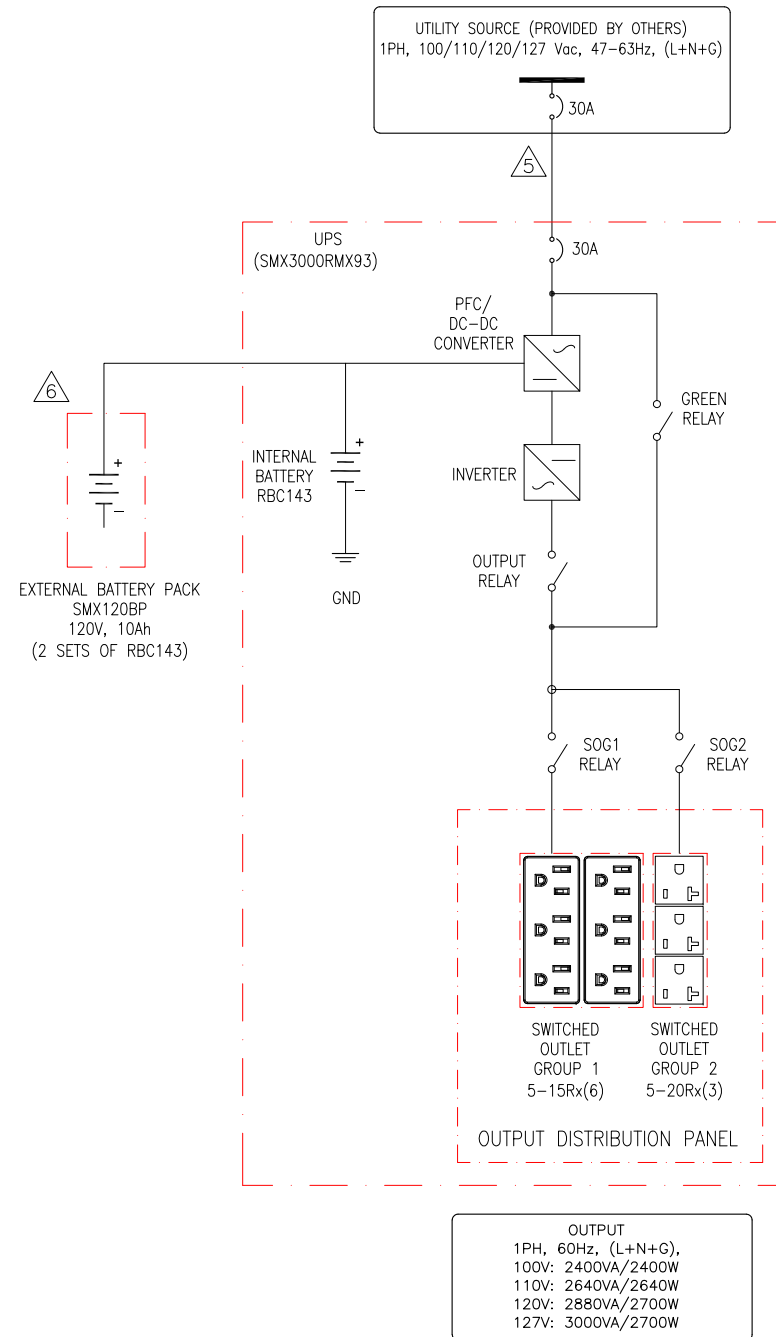
**Schneider Electric**

**TITLE:** APC Smart-UPS  
Input: 120VAC, (L+N+G), 50/60Hz, 1PH, NEMA L5-30P  
Output: 120VAC, (L+N+G), 1PH, (6)NEMA 5-15R, (3)NEMA 5-20R  
RACK MOUNT 3000VA UPS  
GENERAL ARRANGEMENT

**PROJECT:** DRAWINGS **SHEET** 3 OF 4

**DWG NO:** SMX3000RMX93 **REV.** 0

<b>DRAWN BY:</b> JAYAPRAKASH	22-JUN-22	THIRD
<b>ENGINEER:</b> Frank Chang/Charles HU	05-JUL-22	ANGLE
<b>APPROVED BY:</b> Harry Chen	05-JUL-22	PROJECTION



#### NOTES:

1. INSTALLATION SHALL COMPLY WITH ALL APPLICABLE NATIONAL, STATE AND LOCAL CODES.
  2. REFER TO PRODUCT DOCUMENTATION FOR ADDITIONAL DETAILS PRIOR TO INSTALLATION AND SITE PREPARATION WORK.
  3. DRAWING DEPICTS POWER SYSTEM CONNECTIONS AND IS NOT REPRESENTATIVE OF PHYSICAL LAYOUT. PLEASE REFER TO MECHANICAL DRAWINGS FOR MORE SPECIFIC PHYSICAL DATA.
  4. UTILITY SOURCE MUST BE 1PH, 100/110/120/127 Vac, 47-63Hz, (L+N+G), PROVIDED BY OTHERS.
- △ CORDSET 8 FEET, NEMA L5-30P IS PART OF UPS.
- △ A MAXIMUM OF 10 EXTERNAL BATTERY PACKS (SMX120BP) CAN BE CONNECTED WITH UPS TO GET EXTENDED RUN TIME.

THIS DRAWING AND SPECIFICATIONS HEREIN ARE THE PROPERTY OF SCHNEIDER ELECTRIC AND SHALL NOT BE COPIED, REPRODUCED OR USED IN WHOLE OR IN PART, AS THE BASIS FOR THE MANUFACTURE OR SALE OF ITEMS WITHOUT WRITTEN PERMISSION FROM SCHNEIDER ELECTRIC. THIS DRAWING IS BASED UPON LATEST AVAILABLE INFORMATION AND IS SUBJECT TO CHANGE WITHOUT NOTICE.

**Schneider**  
Electric

**TITLE:** APC Smart-UPS  
Input: 120VAC, (L+N+G), 50/60Hz, 1PH, NEMA L5-30P  
Output: 120VAC, (L+N+G), 1PH, (6)NEMA 5-15R, (3)NEMA 5-20R  
RACK MOUNT 3000VA UPS  
SYSTEM ONLINE DIAGRAM

**PROJECT:** DRAWINGS **SHEET** 4 OF 4

**DWG NO:** SMX3000RMX93

**DRAWN BY:** JAYAPRAKASH 22-JUN-22

**ENGINEER:** Frank Chang/Charles HU 05-JUL-22

**APPROVED BY:** Harry Chen 05-JUL-22

**REV.** 0

**ANGLE**

**PROJECTION**

**N.A.**